

River Art Museum Inc.

Produced for River Art Museum Inc.

Title: Artist To Artist

[More on the Web](#)

Genre: Reality TV Dramatization

Directors: TBA

Cast: TBA

Executive Producers: TBA

Location: NY, CT, CA

© 2022 Glen River



Log Line:

Production crew shooting interviews with artists for TV show bring individual perspectives along with skills.

What lies beneath the public appearance is uncovered.

Elevator Pitch

The Museum hires a production crew to document art and conduct interviews and location shoots for biographies of artists. The Museum selects a crew who are familiar with art. The artists' studios are in CT, CA, MA, and NY. They also attend open studios, art openings, private parties, clubs and other events of interest in an unofficial capacity. On unofficial locations, they are obliged to record with GoPro cam and smartphone video. Artists who are the subject of productions have the choice of strict documentary interview or participating in the dramatic option. When they select the dramatic option, they are excited to talk "behind the scenes" personally about their lives and their opinions and are free to interact with the crew in a personal manner.



Major Characters Include

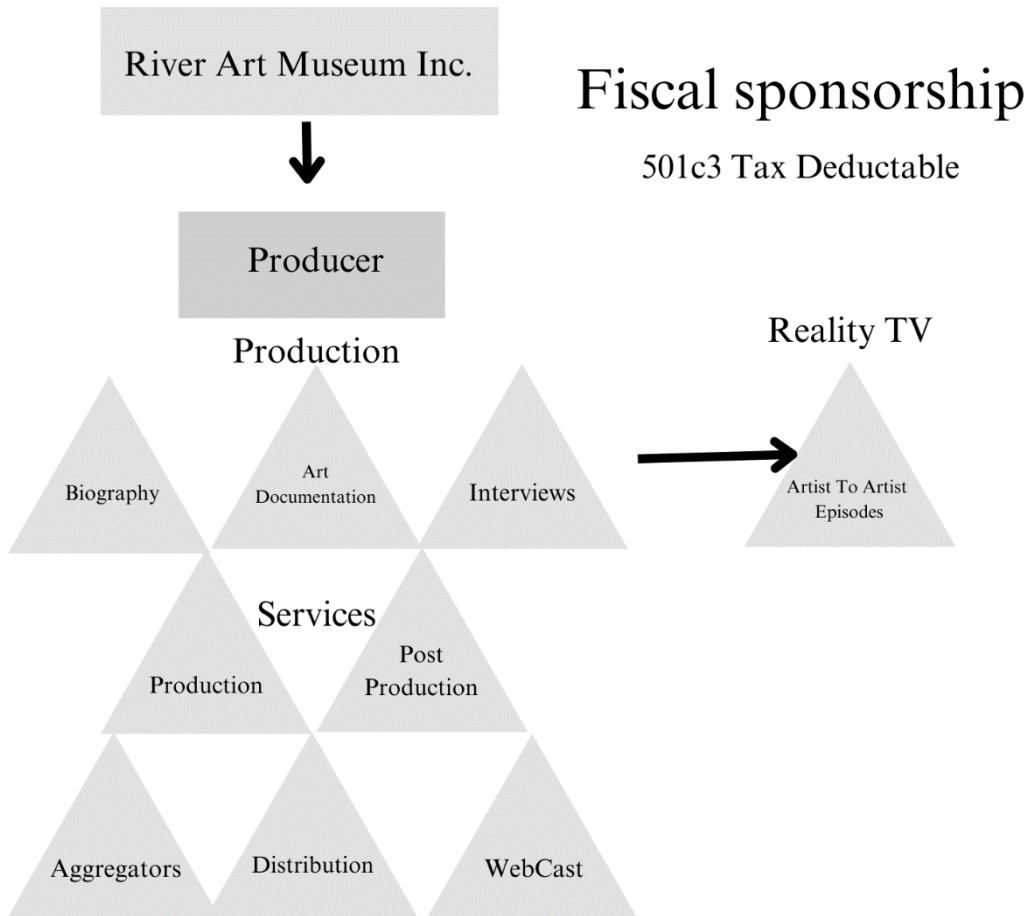
- member Production Team, Interview Anchor
- member Production Team, Camera 1 Steadicam
- member Production Team, Makeup, Camera 2 / Lighting
- member Production Team, Audio/Boom/Lav



Episodic Characters

- Artist, subject of program
- Lawyer for Production Team
- Gallery director
- Event director or coordinator

[Apply Online Now](#)



The River Art Museum Inc.

Supports projects which directly advance our mission:

To save our vanishing American heritage of art and contributions of artists. To save biographical materials, images and works of art. To tell the stories of our creative worth. To enable artists to document their life's work and make it public. To enable the creative process to be recognized as the vital resource necessary for continued prosperity and cultural development. To provide enrichment to the public through presentations of previously lesser-known American art and artists.

In 2023 We are using the crowdfunding services of Seed & Spark to support the production of Reality TV episodes we believe will deliver entertaining as well as informative insights. We call the series, Artist To Artist

Yes, this fiscal sponsorship means that donations made to the production, “Artist To Artist” either via crowdfunding at seed and spark or directly to the museum, are tax deductible contributions under 501C3 charitable organizations.

Casting For immediate release

We are seeking actors for a Reality TV series ... *Artist to Artist* [Apply Online Now](#)

The age range is between 18 and 26. with an ability to captivate the audience.

1. Player Jane Doe ... “The Model” Her personal goal is high fashion model. She works as (Hair & Makeup) as well as Lighting, grip, and second camera, Go-Pro, Phone cam. Her interests are focused on public relations, photography for publicity, glam publications, and supermodels.
2. Player Jane or John Doe ... “The Anchor” the anchor is the brains of the outfit. She/he organizes and directs the location shoots in addition to her/his role as interviewer. She/he is the boss. Looking after everyone else's job and seeing they are prepared for action makes for a hyper attentiveness. She/he gets “Bright ideas” on how to do things or boost the show.
3. Player Jane or John Doe ... “The Driver/Audio/Boom/Tech” Electrical setup and audio have her/him fussing with everyone’s lavalier microphone positioning and testing. Security/medic responsible for vehicle and equipment.
4. Jane or John Doe ... “The Camera” camera operator. Always ready. Often suggesting positions of players to get best shots.

All players are themselves, bringing outlook style and attitude in keeping with their natural identity. In place of a script, general production notes will suggest topics of focus for the day’s shoot. The artists-in-the-studio visit shoots are rotating guest spots.

Reality TV has evolved from game show and amateur talent competition to stunts, dating, and documentary-style series. The genre now encompasses unscripted dramas, lifestyle, dating shows, and all kinds of competition.

Ours is an unscripted dramatic and documentary-style series, following artists and crew.

Glen River is an artist, writer, producer, and director who creates movies centered on art and artists. In addition to his documentaries, his movies include the feature length narrative film Mira's Song, and narrative shorts, The Big Secret, and Thugs. In development is the narrative feature crime/drama Art House Conspiracies. Artist to Artist was a long series of interviews and studio visits unique in the frank and personal rapport special to artists speaking together. This program is intended to develop a new audience excited and entertained by life drama of "The Crew" producing the series.

River Motion Pictures

RiverMotionPiictures.com
info@RiverMotionPiictures.com

43 Lakeview Ter., Sandy Hook, CT 06482 USA
1 (475) 444-2977

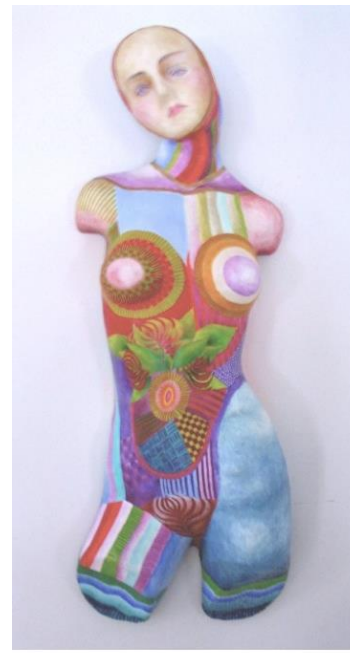
Sample Artist List



Artist Anique Taylor



Andromeda MM 36"X15"

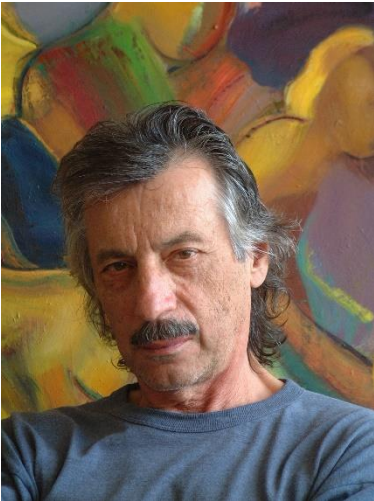


Calliope Mixed Media 36"X15"



DreamScape MM 14"X11"

Sample Artist List



Artist Gus Moran



The Studio



The Art



Artist Brechin Morgan



Art



Art

Similar to and different from these classic shows.



Making the Band (ABC/MTV, 2000-09)

This reality program tried to show the music industry inside the recording studio and did launch top-selling acts like Danity Kane. The first few seasons were a boy-band with Lou Pearlman, and later P. Diddy crafting future stars.

Like this show, we explore the artist's studio and delve into the fundamentals of building a successful career. Unlike the show, we do not groom and tailor product for an audience. We create stand-alone interviews and profiles as short features.



Project Greenlight - Matt Damon and Ben Affleck with Chris Moore showed challenges in making movies. They helped aspiring filmmakers take their first movie from page to screen. The process was providing the drama. It was described as “award-worthy.”

Like this show, the drama is in the reactions and interactions along the way as production schedules, goals, and personalities, test participants and crew. Unlike this show, it is not mentor driven. The crew, while well qualified, are on their own.



The Osbournes - Ozzy Osbourne and his family became a sensation in 2002. The inside “celeb-reality” was a hit: Ozzy and his family in their L.A. mansion were relatable. (Who hasn’t thrown a baked ham over their fence at a neighbor during a dispute?) The show ended after three years.

Like this show, we intend our “crew” to have an extended family core supporting eccentric individuality from which they reach into their daily lives. Unlike this show, as our crew are not born into it, there is an ongoing redefinition of loyalty and bond as they work and trust together. Our crew are not celebrities, but in their world, the artists they interview are.



Below Deck - Captain Lee, “Stud of the Sea,” helped start the franchise, which now includes Mediterranean, Sailing Yacht, and Down Under. The yacht staff continue to entertain with witty insights. Getting the job done and pleasing the guests provides ample drama and mirth.

Like this show, our “crew” have a job to do and featured artist guests to deal with. The director is our captain and while mutiny is out of the question, dissent is a part of their daily lives. Unlike this show, our crew are not trapped on board for extended time. They have the after party to distract and indulge their method of down time.

Why Equipment?

Owning the equipment allows us to continue producing episodes at the most economical rate.



Blackmagic ursa mini pro 4.6K is approved by Netflix. Meeting standards of streamers increases the likelihood of a good distribution deal. Also, with the camera comes a key for professional level DaVinci Resolve 18 – Studio. Our editing program of choice. Looking forward, this editing platform has automatic upload ability from cutting edge iPhone 15 Pro with ProRes professional format. This small footprint works for studio interviews as well as on the shoulder, “run & gun” action.

To make the camera effective we choose a versatile zoom lens.



Sigma 24-70mm f/2.8 DG OS HSM Art Lens

flexible short range zoom best for interview and general locations. The 24-70mm lens can capture stunning wide-angle portraits as well as full-body poses and tight headshots.

Movo WMX-20-DUO 48-Channel UHF Wireless Lavalier Microphone

Camera Data memory ~ Auray BP-59A Aluminum Boompole ~ Rolls MX401 Four-Channel Stereo Mixer

Sennheiser MKE 600 Shotgun Microphone ~ Sony MDR-7506 Headphones ~ Actors pay

Office, web, communications, PR, and incidentals, insurance, locations fees, legal fees, digital backup

transportation, laptop, external hard drives, smartphones, additional Lavalier mics, publicist

Schedule

- Filming in Connecticut, New York,
- 3 Weeks pre-production
- 4 weeks principal photography New York
- 4 weeks principal photography Connecticut
- 3 weeks postproduction

Funds Breakdown

Funds are project startup “Pilot” and episodes. Crowdfunding such as Seed & Spark

- Writer (instead of a script we have producer/director notes)
- Legal Fees \$500 retainer for overview service on project
- Casting is part of the early episodes, producer, director, hold auditions and select crew.
- Casting calls on Backstage and local theater companies
- Development Expenses \$1,000
- Production Team \$10,000
- Locations: CT, Brooklyn, Woodstock, NY

Past Movies

Documentaries



American Picasso

Silvermine 7

Newtown Art Show

Foyer Gallery Art Show

New Paltz Art Opening

Art Movies

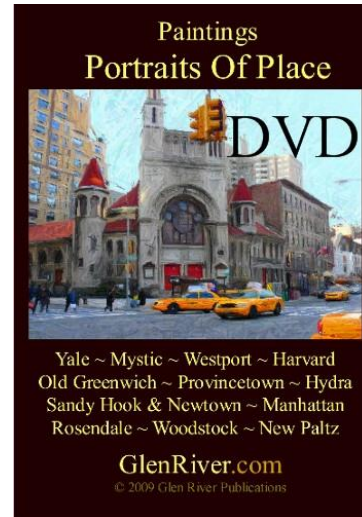
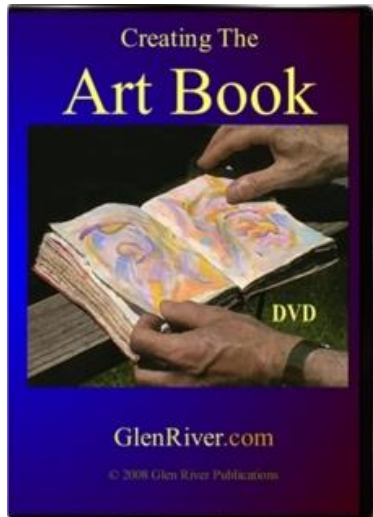


Computer Art

Drawing Shaman's Mirror

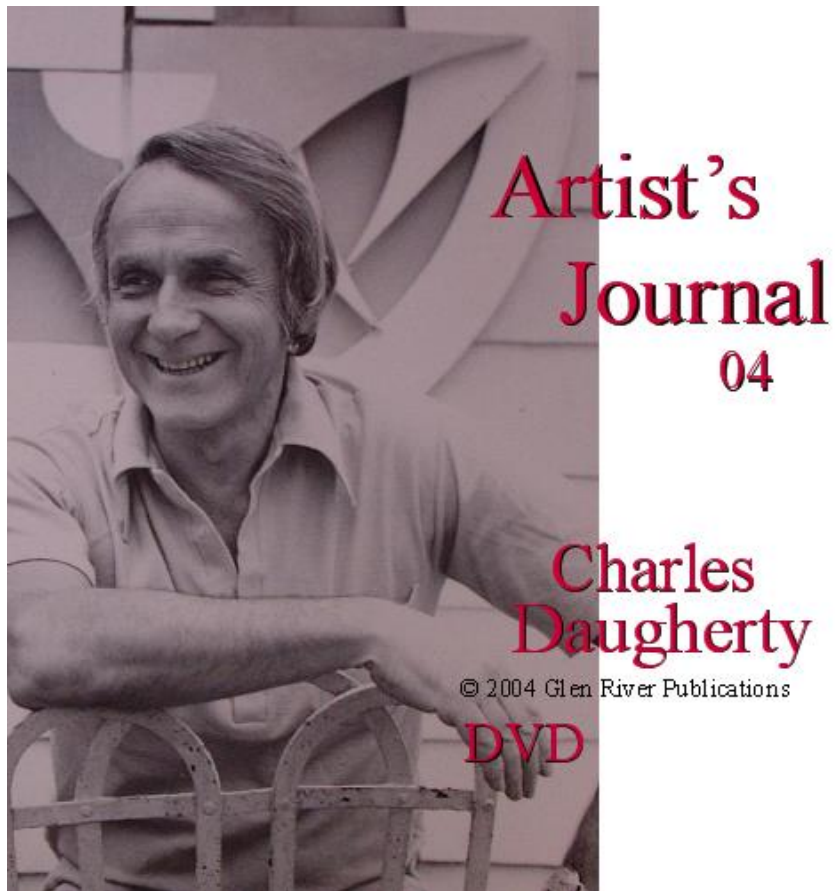
Art Book Process

Art & Poetry Book



Limited Edition DVD

In this period River produced movies for artists, dancers, and musicians. River also continued with experimental art movies and animations.



A series of
Past Interviews with Artist

A series of interviews with artists ~ Artists: John Jagle, Gus Moran, Charles Daugherty, Carolina Jimenez, Ishmael Rodriguez, Phillip Levine, Josie Peralta, Brechin Morgan, Tom Scippa, Stuart Bigley, George Chaplin, Lisa Daugherty, Mike M. Mitchell, Kurt Henry, Joseph Ruffini, and others.



River on location in Hudson River Valley

Upcoming Documentaries

Permanent Exile
The Older You Get
Art Trash

Artist to Artist – The Feature Film